



KIDS FESTA AT WEST 9 ZONE KIDS

春 夏 樂 遊 西 九 匯

With a view to fostering a closer community partnership, we decorated West 9 Zone Kids ("W9Z") into a kids festa, featuring a variety of delightful and kid-friendly activities such as balloon twisting, hand and face painting, magic show and game booth. Moreover, a taekwondo performance was presented by students from the taekwondo centre, a tenant of W9Z.

It was a pleasurable occasion for the kids, and we will hold more fun events in the mall to bring happiness to the kids and the community.



Talent Show



Game booth

Hand and face painting

Balloon twisting





RECYCLING FACILITIES ENHANCEMENTS

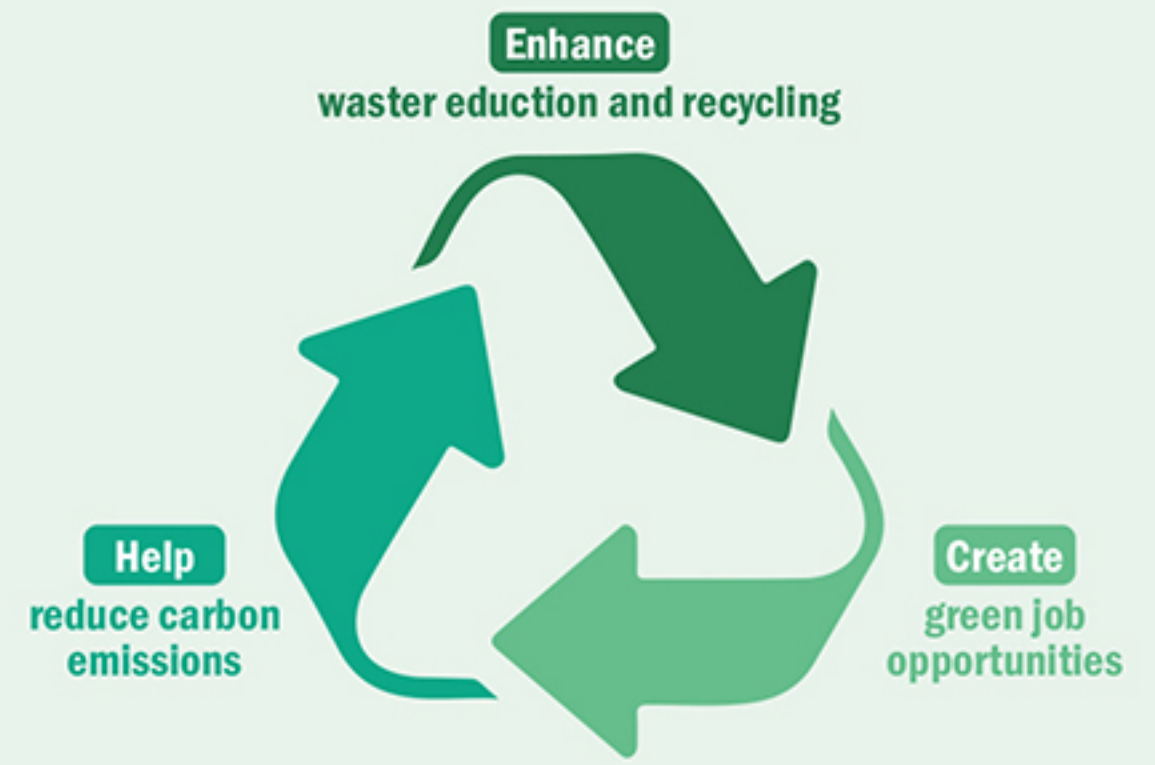
More sustainable options for waste disposal and recycling is important for an effective waste management.

To echo with the theme of minimizing waste disposal, the new recycling corner and station are set at the 2/F entrance of Metro City Phase I Property ("MCPI") and the lobby of Java Road 108 Commercial Centre. In addition, more recycling bins to collect rechargeable batteries and glass bottles will come soon at our office properties as part of our recycling facilities enhancement.

If you would like to obtain more information about the recycling facilities, please contact our property management office.



Property management of Sunlight REIT



▲ Recycling corner at MCPI



ARC ENERGY RATING

Arc is a platform for tracking data in five categories including energy, water, waste, transportation and human experience to generate a score which engages the participants to take action and influence behavior toward a higher level of sustainability. As we attach great emphasis on effective energy management in our daily operations, we are delighted to have achieved an outstanding Arc performance score in the energy category in February 2024, a testament to our ongoing efforts in enhancing the sustainability journey of Sunlight REIT.

Through the process of Arc certification, we have gained a better understanding of the energy efficiency level of our portfolio and its environmental impact, assisting us to identify improvement areas with the aim of reducing carbon footprint and creating a greener community.





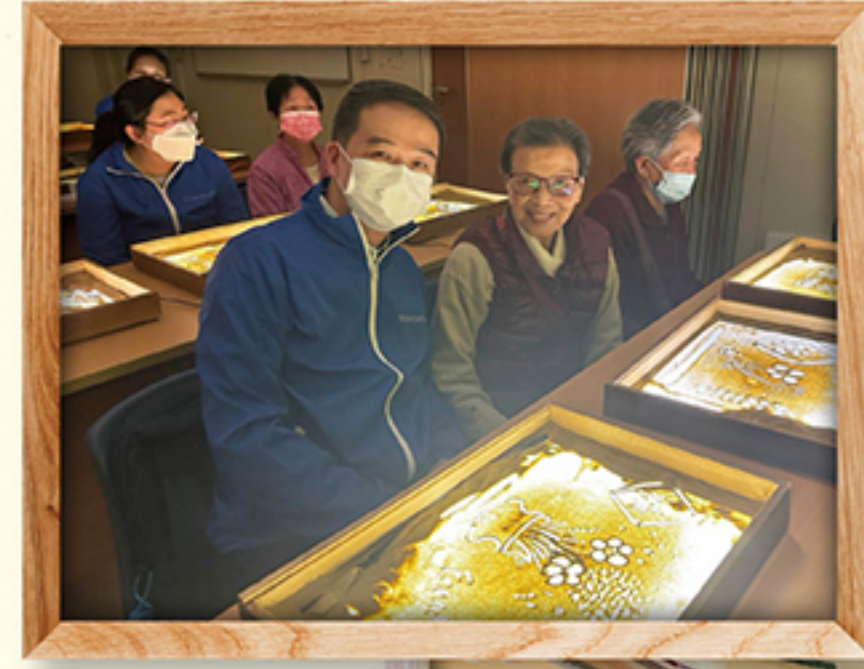
“DRAWING FROM THE HEART” SAND PAINTING WORKSHOP



▲ The workshops received a warm reception with 36 elderly participants.

With a growing number of elderly living alone in Hong Kong, social support for managing their feelings and emotions is particularly important to mitigate the risk of mental health problems. With a view to providing a channel for the elderly to convey their feelings and emotions, we have partnered with Christian Family Service Centre to organize a series of sand painting workshops from November 2023 to February 2024 through which they can better express themselves in a natural way.

After the workshops, the elderly participants were invited to exhibit their sand paintings at MCPI on 10 March 2024. An exhibition for their beautiful sand paintings was held at MCPI from 9 to 17 March 2024, and at Dah Sing Financial Centre (“DSFC”) from 18 March to 11 April 2024. It is our strong intention to maintain our efforts in organizing meaningful activities for the elderly and the community.



CHINESE MEDICINE HEALTH TALK AND CONSULTATION AT THE WELL



▲ The participants learned acupoint massage under the doctor's guiding.

To raise the health awareness in spring which is typically a season for preventive care in Traditional Chinese medicine, we have invited a registered Chinese medicine practitioner from Christian Family Service Centre to conduct a Chinese medicine health talk and consultation session for our tenants on 22 March 2024 at The Well of DSFC.

The practitioner shared useful tips about how to take care of our bodies during the spring season. Furthermore, he performed a 1-on-1 Chinese medical consultation for the participants and provided them with Chinese medical advice.



HIGHLIGHTS OF NEW TENANTS



WINEBOOK
Shop 2035



Zoff
Shop 2039-40



E-Love
Shop 2220



Y & Y
Shop 2223



GRINDIE
Shop G28-28A



Joyful Smile Dental
Shop G101&110



Prime & Naturals
Shop 222



Conrad Dental Care Centre
Shop 238B

Ebi Tamashi
Shop 241, 250-251



subway
Shop 254-255



大新金融中心 DAH SING FINANCIAL CENTRE



NOC Coffee Co.
Shop 3-4



Poke Love
Shop 1-2



Queen's Road East
皇后大道東

